

# SYNCO Pex<sup>®</sup>

## Preparation of a pre-insulated pipe for the assembly of connectors



Use a saw or a knife to remove the outer casing of the pipe from the end of the pipe together with the insulating material



Cut the service pipe perpendicularly with shears that are used to cut plastic material.



Use a knife to trim the edge of the pipe PEX.



In order to facilitate the insertion of the transition connector core into the interior of the service pipe, especially in the diameter range of 50 mm to 125 mm, heat the ends of the pipe with an electric or gas heat gun to a temperature of 70°C



**Syncopex LLC**  
1712 Pioneer Ave  
Cheyenne WY 82001



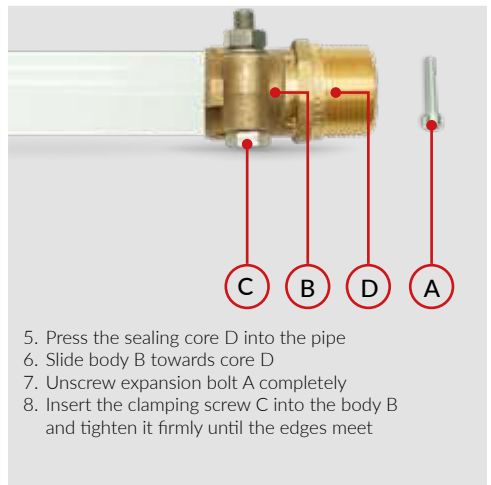
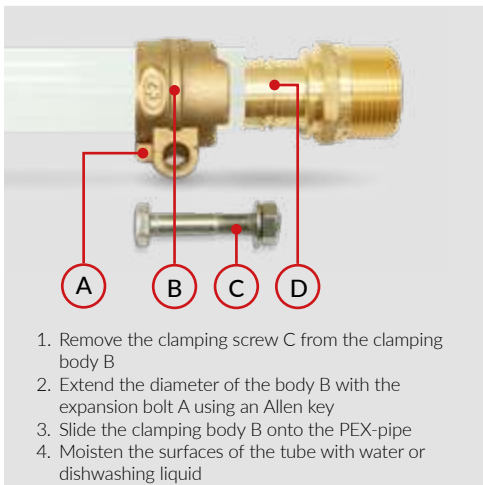
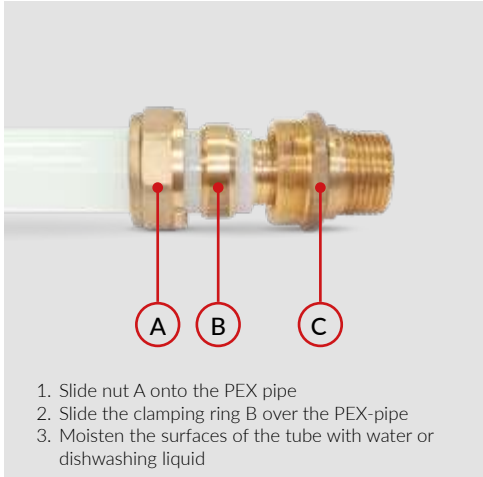
US: + 1 (571) 338-3189  
PL: +48 52 346 31 20  
tel./fax +48 52 344 12 39

synco@synco-pex.com  
www.synco-pex.com



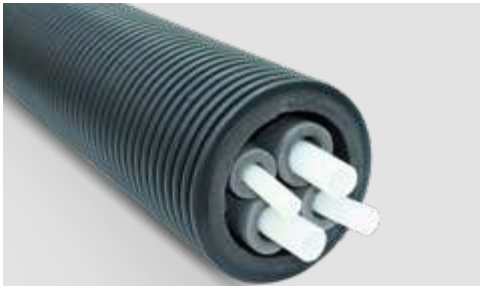
# Assembly instructions for Hela fittings

Threading parts of Hela fittings in connection with T-pieces, couplings, etc. should be sealed using Teflon threads or tapes.



## Installation instructions for thermal plugs

This operation should be carried out only in the group of multi-pipe pipes in one housing. The construction of the pipeline, apart from its exceptional flexibility, allows for very good thermal insulation.



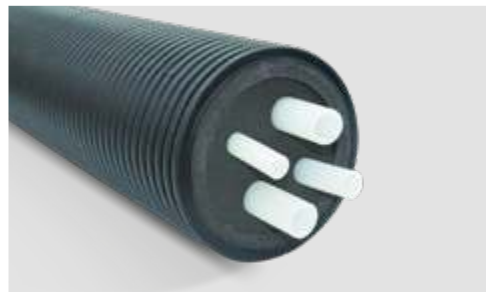
Factory design of a multi-pipe pipeline



To enable proper insertion of plugs, the thermal insulation should be removed from the line pipes to a distance corresponding to the thickness of the plug. It is best to cut the thermal insulation with a sharp knife at an angle of 90°



Push the heat-insulating plug over the line pipes and into the insulated outer casing



Only on such a closed pipeline the end cap and Hela fittings can be assembled



## Assembly instructions for end caps



System contains two types of caps: System zawiera dwa rodzaje kapturów:

- press fit
- thermo-shrinkable



Slide the cap onto the service pipe and the outer casing as far as it will go. The snap points on the inside of the cap fix it in the notches of the casing.



Using a mild flame, evenly shrink the heat shrinkable cap around it, first on the casing and then on the housing of the service pipe.